



# STB

## SERIE

**With steps:**

STB183	STB243	STB363
Length: 18"	Length: 24"	Length: 36"
Depth: 28"	Depth: 28"	Depth: 28"
Height: 25"	Height: 25"	Height: 25"

**Without steps:**

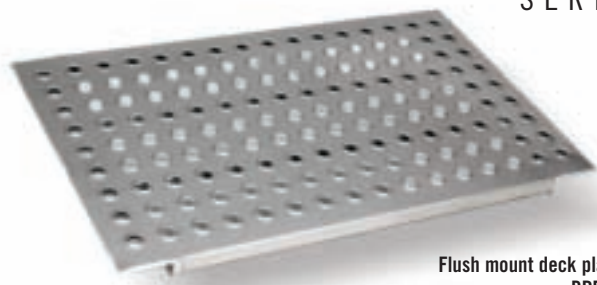
STB18	STB24	STB36
Length: 18"	Length: 24"	Length: 36"
Depth: 18"	Depth: 18"	Depth: 18"
Height: 23 <sup>1</sup> / <sub>4</sub> "	Height: 23 <sup>1</sup> / <sub>4</sub> "	Height: 23 <sup>1</sup> / <sub>4</sub> "

### STB Stepbox

- Standard width: 18", 24", 36"
- Available with or without step
- Door with automotive grade rubber seal
- Polished stainless steel folding T-handle with key locking and dust cover
- Aluminum weld-on hinges with fixed stainless steel pin

# DP60

## SERIE



**Flush mount deck plate**  
**DPE60**  
 Length: 33"  
 Depth: 20"  
 Height: 1"

### Deck Plate

- Plain aluminum with embossed nonslip tread
- Drainage holes
- May be flush mounted to the chassis

# ADG

## SERIE



**Bright Light Deflector**  
 Diameter: 6"  
 Length: 6"

### ADG Bright Light Deflector

- Polished aluminum
- In pairs (left and right)



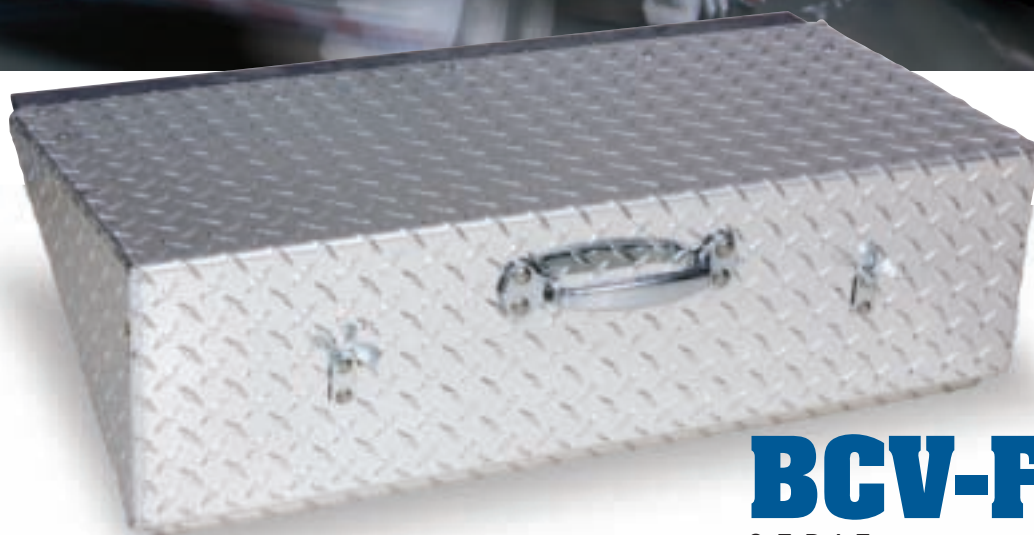
# Description

## Truck Equipment

Description	Product code	Dimensions (in.)			Above	Total depth	Weight (lb.)
		H	D	L			
Stepbox set Without step	STB18	23 <sup>1/4</sup>	18	18	6 <sup>3/8</sup>		25
	STB24	23 <sup>1/4</sup>	18	24	6 <sup>3/8</sup>		35
	STB36	23 <sup>1/4</sup>	18	36	6 <sup>3/8</sup>		47
Stepbox set with 3 step	STB183	24	18	18	6 <sup>3/8</sup>	28 <sup>1/4</sup>	30
	STB243	24	18	24	6 <sup>3/8</sup>	28 <sup>1/4</sup>	40
	STB363*	24	18	36	6 <sup>3/8</sup>	28 <sup>1/4</sup>	52

\*Recommended installation with BR2418 steel bracket

Description	Product code	Dimensions (in.)			Weight (lb.)
		H	D	L	
Deck plate	DP60	1	20	33	15
Flush mount deck plate	DPE60	1	20	33	15
Step	ST122	22	10 <sup>1/8</sup>	12	15
	ST182	22	10 <sup>1/8</sup>	18	18
Bright light deflector (pair)	ADG	(diameter: 6)		6	2
Bracket light	BL1	8	10	12	4



## BCV-F4

SERIE

**Battery cover**  
Length: 31"  
Depth: 15<sup>5</sup>/<sub>8</sub>"  
Height: 9<sup>5</sup>/<sub>16</sub>"

### Battery Cover

- Four-battery cover for standard installation
- Diamond aluminum
- Polished-chrome finish steel handle
- Zinc-plated hood fastener receptacle

## CW

SERIE



**Cab walk**  
Height: 15"  
Depth: 10"  
Adjustable length: 55" to 68"

### Cab Walk

- Diamond aluminum
- Standard height: 15"
- Width: 10"
- Adjustable length: 55" to 68"

## RH33

SERIE



**Release hook**  
Length: 33"

### Release Hook

- Nickel-plated hook
- Ideal for disengaging trailer hitches



# Description

## Truck Equipment

Description	Product code	Dimensions (in.)			Weight (lb.)	
		H	P	L		
Battery cover	Freightliner model	BCV-F3 (3 batt.)	95/16"	155/8"	241/4"	13
	Freightliner model	BCV-F4 (4 batt.)	95/16"	155/8"	31"	15
	International model	BCV-I4 (4 batt.)	141/4"	281/2"	181/4"	15
Cab walk		CW 556815	15	10	55 to 68	25
Vertical tire mount		CT 1850	32	11	50	40
Release hook		RH 33			33	3