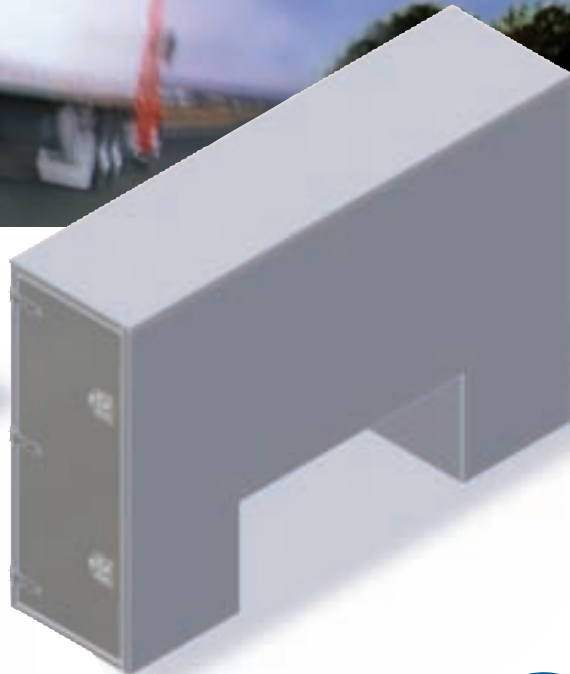




NTB

SERIE



NTBC

SERIE

Stainless Steel folding T-handle



Stainless steel strap hinge



Tunnel Box

- Plain or diamond aluminum in thicknesses of 0.100", 0.125", and 0.1875"
- Integrated Rain Gutter (IRG) construction for greater watertightness and rigidity
- Minimum 1 1/2" lip to maximize door opening
- 2 Doors with automotive grade rubber seal
- Stainless steel polished strap hinges
- Polished stainless steel folding T-handle with key locking and dust cover
- Stainless steel hardware with round head nuts
- Floor and frame model
- 1 year warranty against any manufacturing defects*



Automotive grade door seal



Integrated rain gutter (IRG) construction

* Some restrictions apply



Descriptions and Options

Tunnel Box

Description	Product code	Checker plate finish	Plain finish	Dimensions (in.)					Weight (lb.)
				H1	H2	P	L1	L2	
Tunnel box floor	NTB6024102	-100	-125P						
Frame tunnel box	NTBC6024102	-100	-125P						

Custom Dimensions

